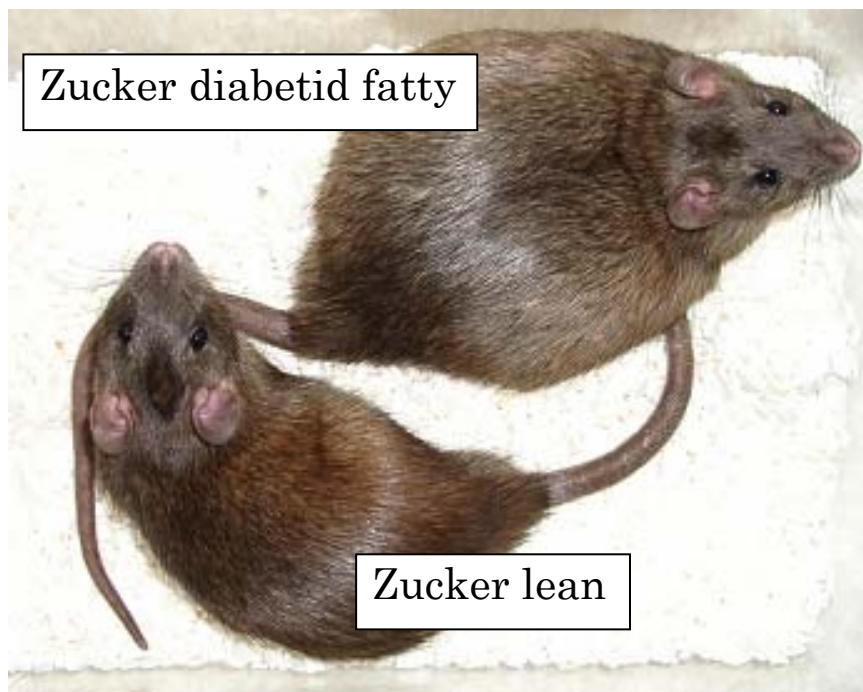


Rat

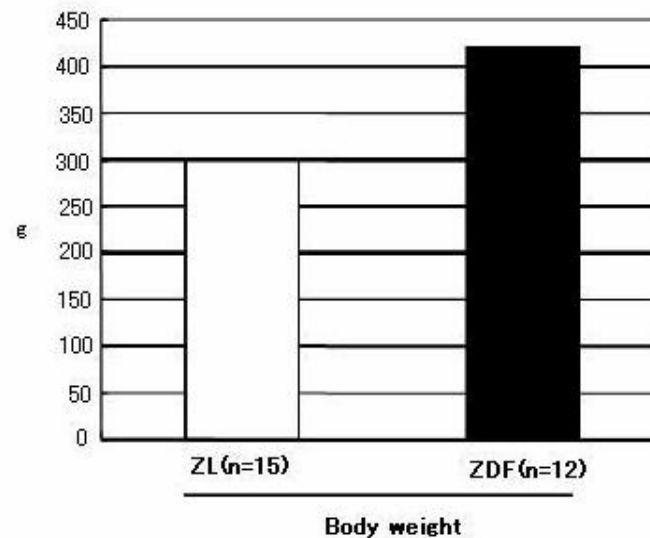
Kwl:Zucker



由来: 1980年にHarrtiet G, Bird記念より導入したZuckerラットを帝王切開によりSPF化した動物です

疾患: 糖尿肥満

Body Weights
in Zucker lean (ZL) and Zucker deabetic fatty (ZDF) rats
from Kiwa Animal Laboratory, Japan



Serum total cholesterol, triglyceride and glucose
in Zucker lean (ZL) and Zucker deabetic fatty (ZDF) rats
from Kiwa Animal Laboratory, Japan

